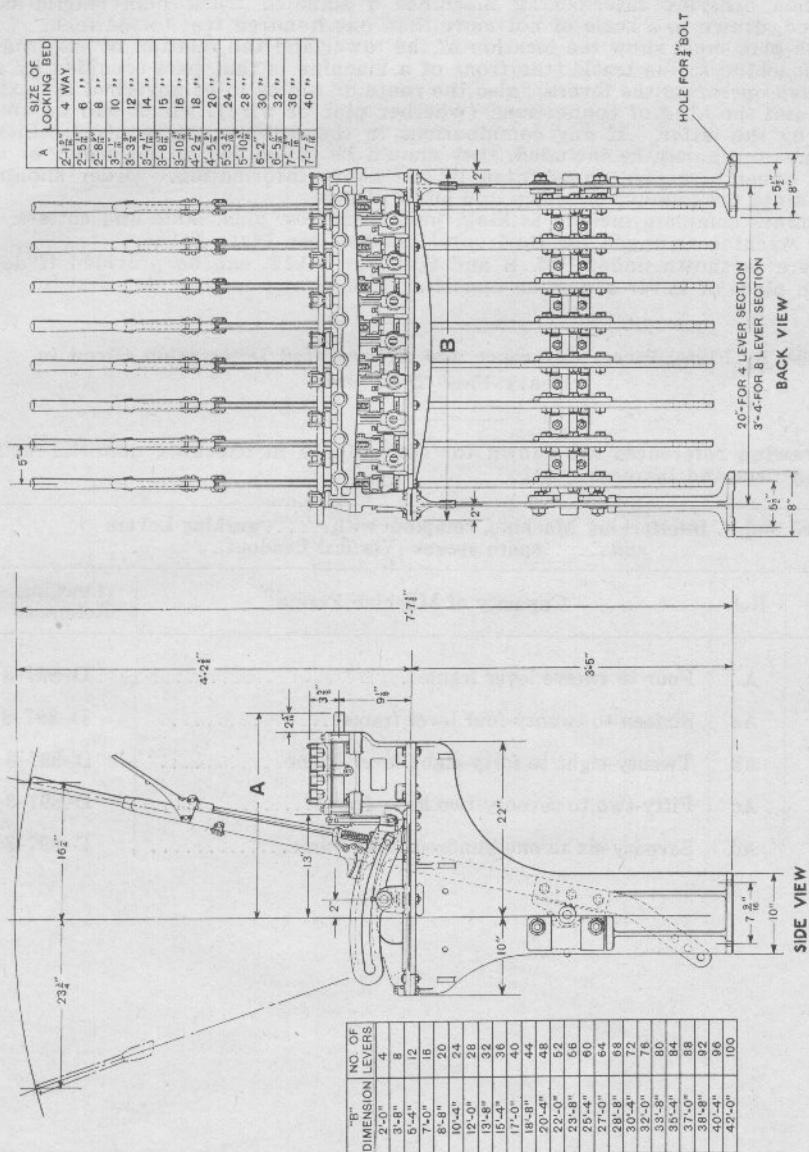


UNION SWITCH & SIGNAL COMPANY

Zachary C. Gillihan 2008



## UNION SWITCH &amp; SIGNAL COMPANY

THE SAXBY AND FARMER INTERLOCKING MACHINE  
ARRANGED FOR HORIZONTAL LEADOUT

This machine is designed for use on the ground floor of buildings, or on the deck level of drawbridges. It differs only from the machine shown on Plate A-100 in the design of the levers, legs, bottom rail and lever shoes, and consequently with these exceptions all other details are applicable. For convenience and to avoid confusion, however, in ordering parts for this machine all details are shown on Plates A-110, A-111, A-112 and A-113.

When ordering Interlocking Machines, a signaled track plan should be furnished, drawn to a scale of not more than one hundred feet to the inch.

The plan must show the location of the tower and the relation of the front of the machine to the track (the front of a machine is that part occupied by a man when operating the levers), also the route or routes to be governed by each signal, and the kind of connections (whether pipe or wire), which will be employed by the latter. If any combinations in the locking are required which would not ordinarily be included, they should be called for in the order, or a locking sheet furnished in addition to the above information. Order should clearly state the number of levers and spare spaces.

Machines complete include locking, jaws, shackles, pins, bolts and cotters. For locking bars, dogs, caps and trunnions, see Plate A-115.

Order by Plate, Piece, Reference and Abbreviated Description Given in  
Heavy Face Type Only.

Drawing references are shown for convenience in checking material with shipping lists and invoices.

| S. and F. Interlocking Machine, complete with . . . . . working levers and<br>. . . . . spare spaces (Horizontal Leadout) |      |   |                      |
|---|------|---|----------------------|
| Piece   | Ref. | Description                                       | Drawing<br>Reference |
|   | A    | Four to twelve lever frame . . . . .              | D-897-4              |
|   | Aa   | Sixteen to twenty-four lever frame . . . . .      | D-897-4              |
|   | Ab   | Twenty-eight to forty-eight lever frame . . . . . | D-897-4              |
|   | Ac   | Fifty-two to seventy-two lever frame . . . . .    | D-897-4              |
|   | Ad   | Seventy-six to one hundred lever frame . . . . .  | D-897-4              |